



New Technologies in the Market Today

“If you could design a tool to
make your job safer and easier,
what would it do?”

1980



Fig. 1 PLAD.

1981



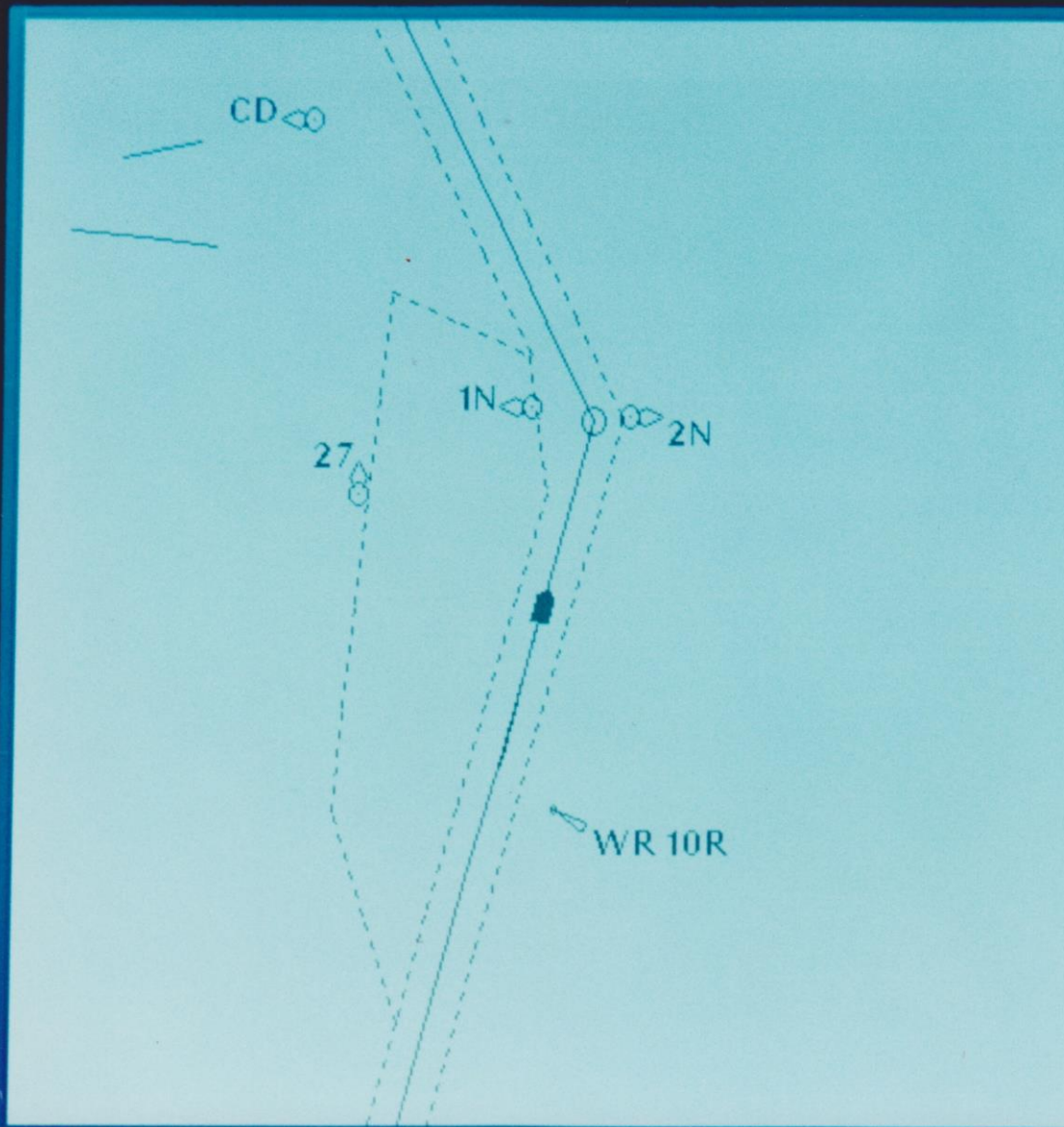
COMING

The PAAC's Association for the Bay and River Delegates

Medical Professionals	Medical Groups
1. Dr. [Name]	1. [Medical Group]
2. [Medical Professional]	2. [Medical Group]
3. [Medical Professional]	3. [Medical Group]
4. [Medical Professional]	4. [Medical Group]
5. [Medical Professional]	5. [Medical Group]
6. [Medical Professional]	6. [Medical Group]
7. [Medical Professional]	7. [Medical Group]
8. [Medical Professional]	8. [Medical Group]
9. [Medical Professional]	9. [Medical Group]
10. [Medical Professional]	10. [Medical Group]

IPAQ

ITURA
D 4/25



REPLAY LOG

IN TO	36
BRC	015°
COG	015°
DIST	2675 FT
SOG	11.5 KT
X	R 21 FT
TTG	00:02
BCN	298.0
SS	57
SNR	19
AGE	5
ETA	16:49
TIME	11:09
WED 10 MAY	
Reedy Island	

1998





2003

Wheelhouse II 2.4.36b Rt: 01: Delaware River (IN) Own: ????

Map labels: LMW, F, C, B, G, Fish Haven, Brown Shoal, Ice Breaker, Harbor Of Refuge Breakwater, Cape May, Brandywine Shoal.

Scale: 2.0 nm

Route markers: 1, 2, 3, 4, 5, 6, 8, 8A, 8B, 10, 11, 12, 14

AIS: MV CAPE HENLOPEN
 Brg: 018° Dst: 9.8nm
 Cog: 234° Sog: 10.8kt

Using F6 Static Info
 No AIS Static Info
 Logging

L 968 ft
 Width: 1000 ft

DGPS

HDG: **340.0°**
 COG: **341.2°**
 SOG: **11.3 kt**

NEXT: 43

BRG: **340.5°**
 TTG: **00:38**¹⁴
 DIST: **7.227 nm**

DEST: Marcus Hook

ETA: **19:36**²⁵
 DIST: **72.80 nm**

Closest AIS	DIST/BRG	SOG/COG
366980160	2.7 / 272°	23 / 250°
366914210	3.5 / 301°	12 / 046°
367141210	3.8 / 248°	0.1 / 170°
367100370	3.8 / 249°	0.1 / 171°
367141190	3.8 / 248°	0.1 / 168°

13:11:14
 12/24/2008
 Log File Ref: 1485

Menu
 Layout: R1-5

start :15(18)W. E. ... AisClient Wheelhouse I... 13:11

2005



WHAT'S NEXT?